



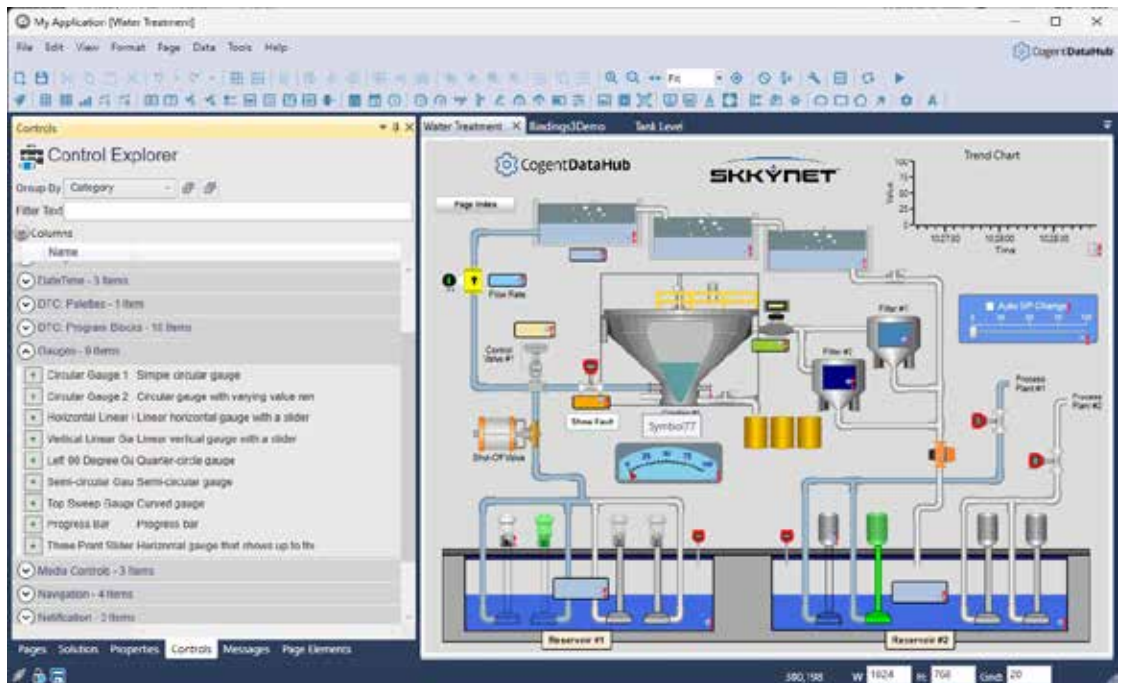
Cogent DataHub™ WebView

A web-deployed graphical interface for any data



A complete, stand-alone HMI

If you're looking for a leading-edge HMI, but not ready to invest in a large and complex SCADA system, then DataHub™ WebView software can easily meet your needs. You get a self-contained package that includes real-time data delivery, web server and HMI designer—an enterprise-wide solution with centralized management and deployment—all in one easy to install application.



Connect to virtually any system

Integrate data from multiple data sources, using the most popular industrial and IIoT protocols: OPC UA, OPC DA, Modbus, MQTT, MQTT Sparkplug B, ODBC, Modbus, and more. Make custom connections from Linux and other systems using a free, open API. Connect to databases from within web pages to build management dashboards.

Build and view pages from anywhere

Web-enabled access lets you build screens from anywhere, while centralized deployment lets you deploy them instantly for viewers everywhere. Flexible linking between controls, and data binding to all DataHub™ data points lets you create intuitive dashboards.

Break through traditional restraints

There are no restrictions on the number of client connections, and no data tag limits. You can provide real-time response, rather relying on high-latency database polling. HMI scripting gives you more flexible control and monitoring options.

Standard features

- Unlimited client and data connections
- Centralized deployment so you can build screens anywhere and view them instantly everywhere
- Flexible linking and data binding for intuitive dashboards
- Use scripting in your HMI for intuitive control and adaptive monitoring
- Real-time response, through very low latency connections
- Integrate multiple data sources and protocols such as OPC UA/DA, OPC A&E/A&C, MQTT, databases, Modbus and more
- Make database calls from within web pages — great for management dashboards

Popular Cogent DataHub™ features

- **OPC UA & OPC DA Support** – connect to OPC UA and DA servers and clients
- **Data aggregation** – merge data from multiple sources into a common data set
- **Data bridging** – connect two or more data sources to share data in real time
- **Modbus** – connect to Modbus TCP slave devices
- **Database** – read and write data to/from any ODBC database
- **Scripting** – program custom solutions to meet your specific needs
- **Security** – supports multi-factor authentication, LDAP support, and IP range restrictions for user and group permissions

System information

DataHub™ software supports OPC UA (server and client), OPC UA A&C (server and client), OPC UA HDA (server), OPC Classic (DA 3, DA 2, and A&E), as well as Modbus TCP, MQTT, MQTT Sparkplug B, ODBC, DDE, TCP, HTTP and more. It runs on the following operating systems:

- Windows Server 2022 / 2019 / 2016
- Windows Server 2012 & R2
- Windows Server 2008 & R2
- Windows Server 2003 & R2 (DataHub v8 only)
- Windows 11 / 10 / 8.1 / 7
- Windows XP SP2 (DataHub v8 only)

About Skkynet

Skkynet is a global leader in real-time software and services that allow companies to securely acquire, monitor, control, visualize, network and consolidate live process data in-plant or in the cloud. DataHub™, DataHub™ for Azure, and Embedded Toolkit (ETK) software enable secure, real-time data connectivity for industrial automation, Industrial IoT, and Industrie 4.0. Visit skkynet.com for more about the company and cogentdatahub.com for more about Cogent DataHub.

Skkynet™, DataHub™, Cogent DataHub™, the Skkynet and DataHub logos are either registered trademarks or trademarks used under license by the Skkynet group of companies ("Skkynet") in the USA and elsewhere. All other trademarks, service marks, trade names, product names and logos are the property of their respective owners.

Ordering information

PRODUCT	CODE	DESCRIPTION
DataHub UA WebView	DHWWUA	DataHub with OPC UA and Tunnelling/Mirroring
DataHub DA WebView	DHWWUA	DataHub with OPC UA and Tunnelling/Mirroring
DataHub WebView	ADDWV	WebView Add-on with Tunnelling/Mirroring